

साईटला भेट देऊन लवकर निर्णय घ्या आणि त्वरीत बुकींग करा.
कारण असा सर्व संपन्न गृहयोग वारंवार येत नाही.



Precise
BUILDERS & DEVELOPERS

94049 83148 94222 04083
94231 93712 9404983142

Office: Plot No. 18, Survey No. 126 / 127, J-Sector,
Satara, Chh. Sambhajinagar - 431 001.

[f](https://www.facebook.com/precisebuilders2023) [i](https://www.instagram.com/precisebuilders2023) / precisebuilders2023@gmail.com



REGISTRATION NO.
P51500047915
maharera.mahaonline.gov.in

Disclaimer: This brochure is only a conceptual presentation and not a legal offering; the details herein are tentative and subject to change at the sole discretion of the Developer without any further reference.

Horizon
2 BHK LUXURIOUS FLATS

A Project by
Precise
BUILDERS & DEVELOPERS



MAGIC ARTS #9028909511

Welcome to Horizon

at Shivaji Nagar, Chh. Sambhajinagar

make your *Dreams* come true with us

Welcome to Horizon

Specifications

• Structure

Structure: RCC structure, earthquake resistance Structure according to ISI Narms

• Brick Work

6" thick brick work from outside & Internal walls of 4" thick brickwork. Internally neeru finished cement plaster & externally sand faced plaster.

• Main Door

Flush Door with both sides laminated, fitted on a plywood frame along with good-quality fittings (Europa or Equivalent).
Bedroom and Toilet Doors: flush door with both sides laminated, fitted on a granite frame along with good-quality fittings (Europa or Equivalent).

• Flooring

Verified tiles 2'x2' in size, with same skirting.

• Kitchen

Kitchen Platform Granite with S.S. Sink Wall tiles up to lintel level above the platform.

• Toilet

Flooring: ceramic, full-height dado.

• Windows

Powder-coated aluminium sliding doors to the balcony and terrace and sliding windows with mosquito nets

• Plumbing

Concealed plumbing with a hot and cold water mixture and a shower in the bathroom. (Jaguar / Kohler / Hindware)

• Electrical Work

Concealed wiring with an AC point in the master bedroom with modular switches. All electrification work is standard ISI marked.

• Paints

Interior: Premium-Quality Acrylic Emulsion Paint
Exterior: Premium-Quality Acrylic Paint

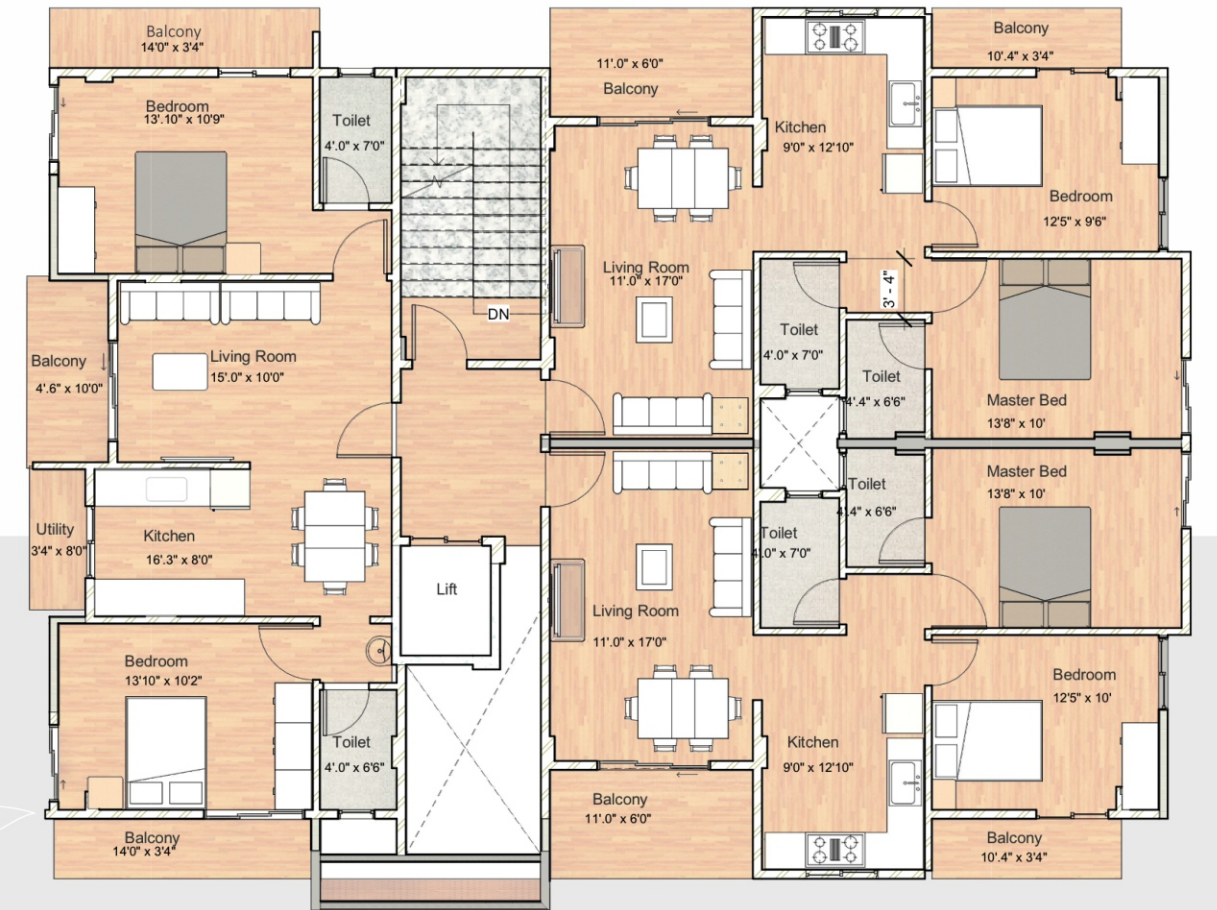
• Lift

Lift Backup Lift and access to all floors. (Kazi / Johnson / Schindler Elevator / Kone.)
Building is covered with CCTV cameras.

Indicative View of 2 BHK Flats



Typical Floor Plan View



- वास्तुशास्त्रानुसार आणि गुणवत्तापूर्ण बांधकाम.
- शिवाजीनगर चौकापासून हाकेच्या अंतरावर.
- सिडको हद्दीत. • फक्त १२ फ्लॉट
- उत्तम बॅकअप लिफ्ट.
- सर्व बँकांची लोन सुविधा.
- सर्व सुखसुविधा फक्त ५ मिनीटांच्या अंतरावर.
- आता बुक करा व मिळवा ६ महिन्यात ताबा.
- पूर्ण बिल्डींग सीसीटीव्ही निरीक्षण कक्षेत.

